

Part Writing with Root-Position Chords

SUPPLEMENTARY MATERIAL

Motion between Voices

Following each given interval, write a second interval in each measure that creates the type of motion indicated below. There are many correct answers for each measure. The first measure is provided as an example.

parallel similar parallel oblique contrary oblique

similar contrary oblique parallel contrary contrary

contrary parallel similar contrary oblique parallel

Close Structure

Spell each chord above the staff using the figured bass. Add inner voices to the following chords to create close structure. It will be helpful to underline the note names as you add them to the chord.

A musical exercise for 'Close Structure' consisting of six measures. The bass staff contains a single note in each measure with the following figured bass symbols below it: #, #, ♯, ♯, ♯, ♭. The treble staff is empty for the first five measures and contains two notes in the sixth measure.

Open Structure

Spell each chord above the staff using the figured bass. Add inner voices to the following chords to create open structure. It will be helpful to underline the note names as you add them to the chord.

A musical exercise for 'Open Structure' consisting of six measures. The bass staff contains a single note in each measure with the following figured bass symbols below it: #, ♭, ##, ♯, ♯, ♭5. The treble staff contains two notes in each measure.

Repeated Chords

Add inner voices to the following repeated chord pairs. Use your best judgment about which structure to choose. Spell each chord above the staff and underline the chord tones as you add them.

Exercise 1: Three measures of music. Measure 1: Treble clef (G4, A4), Bass clef (F#3, G#3). Measure 2: Treble clef (G4, A4), Bass clef (G3, A3). Measure 3: Treble clef (G#4, A4), Bass clef (F3, G3).

Exercise 2: Three measures of music. Measure 1: Treble clef (G4, A4), Bass clef (F3, G3). Measure 2: Treble clef (G4, A#4), Bass clef (F#3, G#3). Measure 3: Treble clef (G4, A4), Bass clef (F3, G3).

Exercise 3: Three measures of music. Measure 1: Treble clef (G#4, A4), Bass clef (Fb3, Gb3). Measure 2: Treble clef (G4, A4), Bass clef (F3, G3). Measure 3: Treble clef (G4, A4), Bass clef (F3, G3).

Find Part-Writing Errors

Find the part-writing errors in the following pairs of chords. Indicate parallel fifths and octaves with diagonal lines. If any pair of chords does not have an error, write OK in that measure.

The first pair of chords is shown in two measures. The first measure has a treble clef with a key signature of two flats (Bb, Eb) and a bass clef with a key signature of two flats (Bb, Eb). The second measure has a treble clef with a key signature of one sharp (F#) and a bass clef with a key signature of one sharp (F#). The third measure has a treble clef with a key signature of three sharps (F#, C#, G#) and a bass clef with a key signature of three sharps (F#, C#, G#). Each measure contains two chords, one in the treble and one in the bass, with notes written as half notes.

The second pair of chords is shown in three measures. The first measure has a treble clef with a key signature of three flats (Bb, Eb, Ab) and a bass clef with a key signature of three flats (Bb, Eb, Ab). The second measure has a treble clef with a key signature of two flats (Bb, Eb) and a bass clef with a key signature of two flats (Bb, Eb). The third measure has a treble clef with a key signature of three sharps (F#, C#, G#) and a bass clef with a key signature of three sharps (F#, C#, G#). Each measure contains two chords, one in the treble and one in the bass, with notes written as half notes.

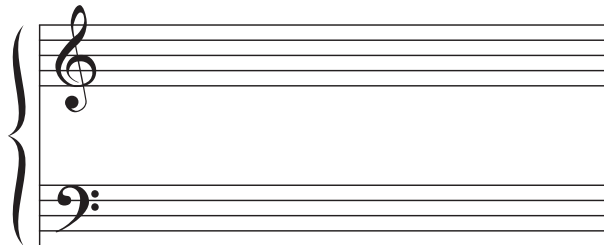
The third pair of chords is shown in three measures. The first measure has a treble clef with a key signature of two sharps (F#, C#) and a bass clef with a key signature of two sharps (F#, C#). The second measure has a treble clef with a key signature of one sharp (F#) and a bass clef with a key signature of one sharp (F#). The third measure has a treble clef with a key signature of one flat (Bb) and a bass clef with a key signature of one flat (Bb). Each measure contains two chords, one in the treble and one in the bass, with notes written as half notes.

Keyboard Exercises

Using the grand staff beside each progression, write the progression in four-part harmony and practice at the keyboard. All exercises should be performed in close structure. It may be helpful to write the upper three voices on the treble staff.

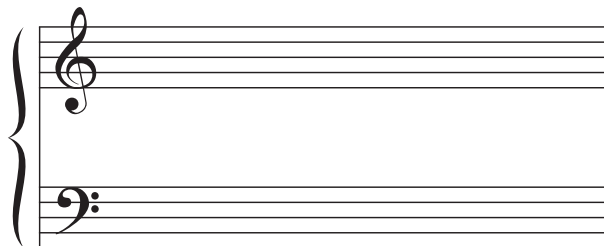
D major

<i>do</i>	<i>mi</i>	<i>sol</i>
I	I	I



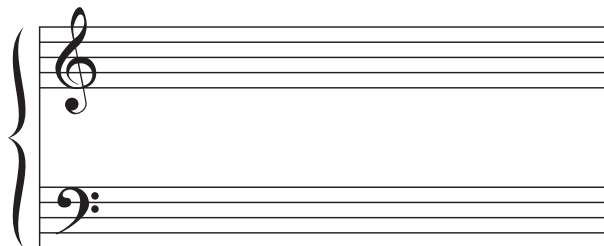
B minor

<i>me</i>	<i>do</i>	<i>sol</i>
i	i	i



E major

<i>sol</i>	<i>re</i>	<i>ti</i>
V	V	V



D minor

<i>re</i>	<i>ti</i>	<i>sol</i>
V	V	V

