

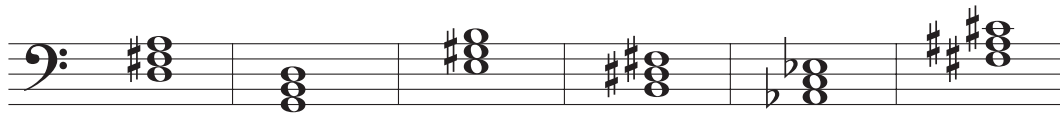
Triads and Figured Bass

PRACTICE BOX ANSWERS

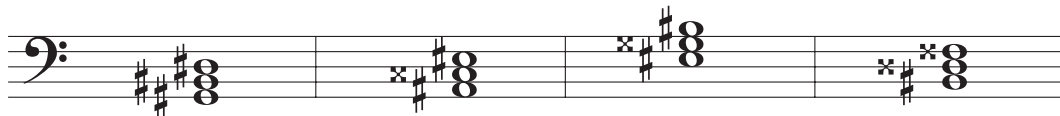
PRACTICE BOX 5.1

1. G 2. D 3. C 4. B \flat 5. F \sharp 6. G \flat

PRACTICE BOX 5.2



PRACTICE BOX 5.3



PRACTICE BOX 5.4

Practice Box 5.4 consists of two staves of music. The top staff is in bass clef and the bottom staff is in treble clef. Both staves contain six measures of triads. The notes and accidentals for each measure are as follows:

Measure	Bass Clef	Treble Clef
1	C4, E4, G4	C4, E4, G4
2	B3, D4, F4	B3, D4, F4
3	C4, E4, G4	C4, E4, G4
4	D#4, F#4, A4	D#4, F#4, A4
5	B3, D4, F4	B3, D4, F4
6	C#4, E#4, G#4	C#4, E#4, G#4

PRACTICE BOX 5.5

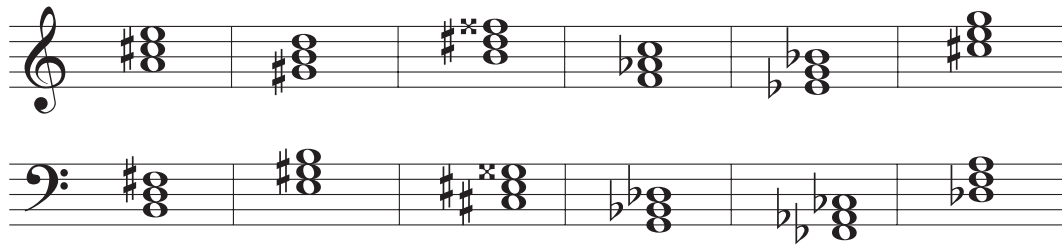
Practice Box 5.5 consists of two staves of music. The top staff is in bass clef and the bottom staff is in treble clef. Both staves contain six measures of triads. The notes and accidentals for each measure are as follows:

Measure	Bass Clef	Treble Clef
1	Bb3, Db4, Fb4	Bb3, Db4, Fb4
2	Bb3, Db4, Fb4	Bb3, Db4, Fb4
3	Bb3, Db4, Fb4	Bb3, Db4, Fb4
4	C4, E4, G4	C4, E4, G4
5	Bb3, Db4, Fb4	Bb3, Db4, Fb4
6	D#4, F#4, A4	D#4, F#4, A4

PRACTICE BOX 5.6

Practice Box 5.6 consists of two staves of music. The top staff is in bass clef and the bottom staff is in treble clef. Both staves contain six measures of triads. The notes and accidentals for each measure are as follows:

Measure	Bass Clef	Treble Clef
1	C#4, E#4, G#4	C#4, E#4, G#4
2	C#4, E#4, G#4	C#4, E#4, G#4
3	C#4, E#4, G#4	C#4, E#4, G#4
4	C#4, E#4, G#4	C#4, E#4, G#4
5	Bb3, D4, F4	Bb3, D4, F4
6	C#4, E#4, G#4	C#4, E#4, G#4

PRACTICE BOX 5.7**PRACTICE BOX 5.8**

- | | | | | | |
|--------------|--------------|---------------|--------------|---------------|----------------|
| 1. augmented | 2. major | 3. diminished | 4. augmented | 5. minor | 6. diminished |
| 7. major | 8. augmented | 9. major | 10. minor | 11. augmented | 12. diminished |

PRACTICE BOX 5.9

- | | | |
|---------------------|-----------------------|------------------|
| 1. F A C# augmented | 2. A# C# E diminished | 3. D F# A major |
| 4. G, B, D, major | 5. E, G B augmented | 6. C# E G# minor |

PRACTICE BOX 5.10

- | | |
|---------------------------------------|-----------------------------------|
| 1. D F A D minor 2nd inversion | 2. C E, G C minor 1st inversion |
| 3. G B, D, G diminished 2nd inversion | 4. B, D F B, major root position |
| 5. B D F# B minor 1st inversion | 6. A, C E, A, major 2nd inversion |

PRACTICE BOX 5.11

ACE	ACE	BDF	DFA	FAC	G B \flat D
-----	-----	-----	-----	-----	---------------

The musical notation shows six triads in bass clef. Each triad is represented by a single note on a staff with an 'x' below it. The figured bass notation is as follows:

6	6 4	6	6 4	6	6
---	--------	---	--------	---	---

PRACTICE BOX 5.12

G \sharp B D	A \flat C E \flat	B D F \sharp	C E \flat G	F \sharp A C	E \flat G \flat B \flat
----------------	-----------------------	----------------	---------------	----------------	-------------------------------

The musical notation shows six triads in bass clef. Each triad is represented by a single note on a staff with an 'x' below it. The figured bass notation and inversion labels are as follows:

\flat	6 \flat 4	6 \sharp	\flat	\flat	\flat 6 \flat 4
1st inversion	2nd inversion	1st inversion	root position	1st inversion	2nd inversion