

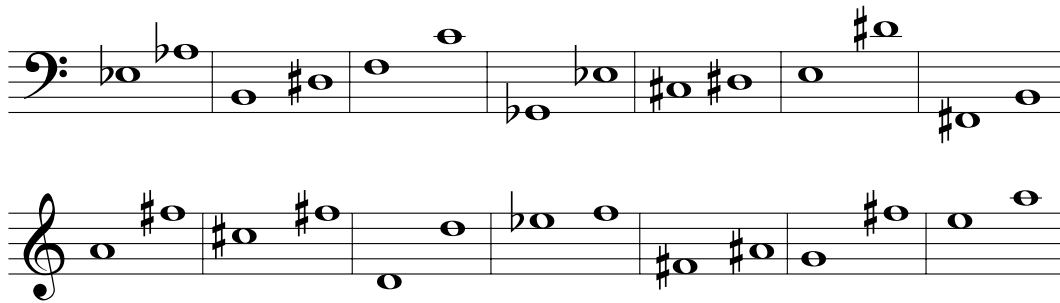
Intervals

PRACTICE BOX ANSWERS

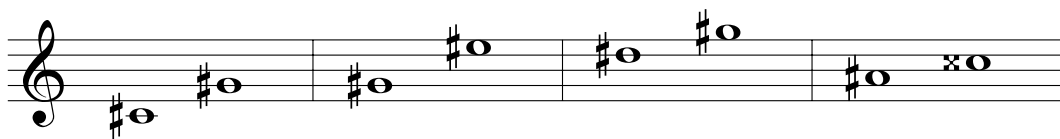
PRACTICE BOX 3.1

1. 4th 2. 6th 3. 3rd 4. 2nd 5. 8ve 6. 7th
 7. 5th 8. 6th 9. 8ve 10. 4th 11. 7th 12. 3rd

PRACTICE BOX 3.2



PRACTICE BOX 3.3



PRACTICE BOX 3.4

- | | | | | | |
|--------------|--------------|--------------|---------------|---------------|---------------|
| 1. major 2nd | 2. minor 3rd | 3. major 6 | 4. minor 7th | 5. major 2nd | 6. major 6th |
| 7. minor 3rd | 8. minor 6th | 9. minor 2nd | 10. major 6th | 11. minor 6th | 12. major 7th |

PRACTICE BOX 3.5

- | | | |
|-------------------|-------------------|-------------------|
| 1. augmented 4th | 2. perfect 4th | 3. diminished 5th |
| 4. diminished 5th | 5. perfect 4th | 6. perfect 5th |
| 7. augmented 5th | 8. perfect 5th | 9. diminished 5th |
| 10. perfect 4th | 11. augmented 4th | 12. perfect 4th |

PRACTICE BOX 3.6

The musical notation for Practice Box 3.6 consists of two staves. The top staff is in treble clef and the bottom staff is in bass clef. The notation shows various intervals between notes on both staves, including major and minor seconds, thirds, fourths, fifths, and sixths, as well as augmented and diminished intervals.

PRACTICE BOX 3.7

- | | | |
|--------------|--------------|--------------|
| 1. minor 3rd | 2. minor 6th | 3. major 6th |
| 4. major 3rd | 5. minor 7th | 6. major 2nd |

PRACTICE BOX 3.8

1. major 2nd – minor 7th

2. major 3rd – minor 6th

3. augmented 4th – diminished 5th

4. minor 3rd – major 6th

PRACTICE BOX 3.9

The image shows two musical staves. The top staff is in bass clef and the bottom staff is in treble clef. Both staves contain six measures of music, each with a whole note. The notes and accidentals are as follows:

Staff	Measure 1	Measure 2	Measure 3	Measure 4	Measure 5	Measure 6
Bass Clef	B \flat	A	G \sharp	F \sharp	E \flat	D
Treble Clef	C \sharp	B \flat	A \sharp	G \flat	F \flat	E \sharp

PRACTICE BOX 3.10

1. major 9th

2. perfect 11th

3. perfect 12th

4. minor 10th

5. minor 9th