

Major Scales and Key Signatures

PRACTICE BOX ANSWERS

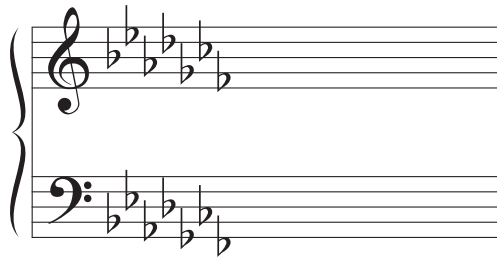
PRACTICE BOX 2.1

Practice Box 2.1 displays three musical staves. The first staff is in bass clef and shows a scale starting on G2, moving up stepwise to G3, with a sharp sign on the final G. The second staff is in treble clef and shows a scale starting on G4, moving up stepwise to G5, with sharp signs on the final G and a sharp sign on the final G. The third staff is in treble clef and shows a scale starting on G4, moving up stepwise to G5, with flat signs on the final G and a flat sign on the final G.

PRACTICE BOX 2.2

Practice Box 2.2 displays a piano accompaniment for a scale. The treble clef staff contains a scale starting on G4, moving up stepwise to G5, with sharp signs on the final G and a sharp sign on the final G. The bass clef staff contains a scale starting on G2, moving up stepwise to G3, with sharp signs on the final G and a sharp sign on the final G.

PRACTICE BOX 2.3



PRACTICE BOX 2.4

- | | | |
|---------------------|---------------------|---------------------|
| 1. A major | 2. A \flat major | 3. G \flat major |
| 4. B major | 5. D major | 6. F major |
| 7. E \flat major | 8. G major | 9. F \sharp major |
| 10. C \flat major | 11. B \flat major | 12. D \flat major |

PRACTICE BOX 2.5

1. 	2. 	3.
4. 	5. 	6.
7. 	8. 	9.

PRACTICE BOX 2.8

1. $\frac{8}{4}$ \circ . = 6

2. $\frac{4}{2}$ \circ . = 3

3. $\frac{3}{4}$ \downarrow . = 3

4. $\frac{4}{8}$ \downarrow . = 3

Answer: Each dotted note receives either 3 counts or a multiple of 3 counts.

5. \downarrow . = \downarrow + \downarrow + \downarrow

6. \circ . = \downarrow + \downarrow + \downarrow

7. \downarrow . = \downarrow + \downarrow + \downarrow

8. \circ . = \downarrow + \downarrow + \downarrow