

The Basics of Reading Music

PRACTICE BOX ANSWERS

PRACTICE BOX 1.1



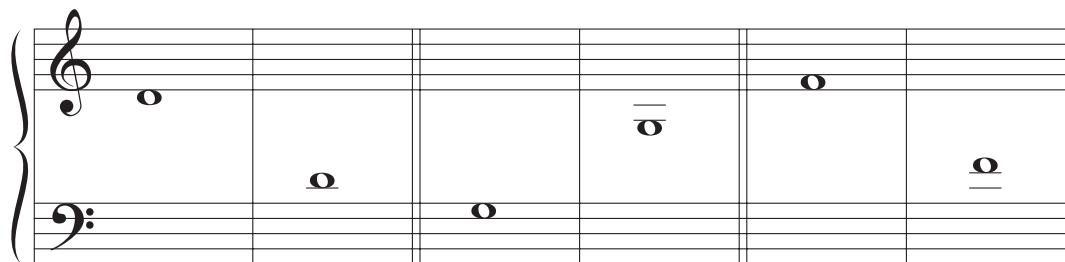
Musical notation for Practice Box 1.1. It consists of two staves. The first staff is a treble clef with a sequence of notes: G, A, F, B, D, E, C, F. The second staff is a bass clef with a sequence of notes: A, G, E, B, F, E, G, C.

PRACTICE BOX 1.2



Musical notation for Practice Box 1.2. It consists of two staves. The first staff is a bass clef with notes: D, E, C, B, D, C, F, E. The second staff is a treble clef with notes: C, A, B, G, A, C, D, B.

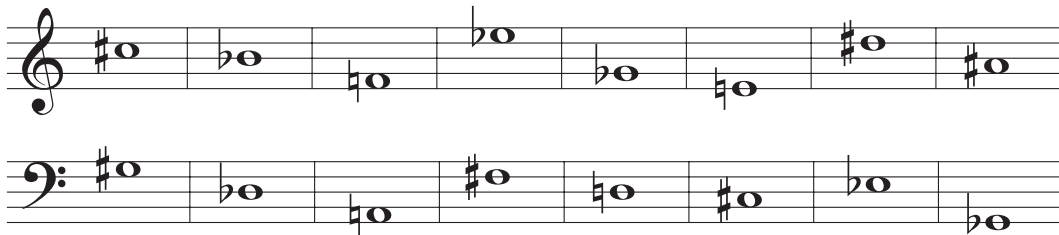
PRACTICE BOX 1.3



Musical notation for Practice Box 1.3. It consists of two staves (treble and bass clefs) with a grand staff bracket on the left. The notes are: Treble clef: G (first measure), B (second measure), D (third measure), F (fourth measure), A (fifth measure), C (sixth measure). Bass clef: D (first measure), F (second measure), A (third measure), C (fourth measure), E (fifth measure), G (sixth measure).

PRACTICE BOX 1.4

- 1. F# 2. A_b
- 3. C# 4. G_b
- 5. A# 6. B_b





PRACTICE BOX 1.5

- 1. A#_b, B_b 2. D#, E_b
- 3. C#, D_b 4. G#, A_b
- 5. B#, C 6. F#, G_b

E# = F B# = C C_b = B F_b = E

PRACTICE BOX 1.6

- 3/8 3 beats per measure, 
- 2/4 2 beats per measure, 
- 4/2 4 beats per measure, 