

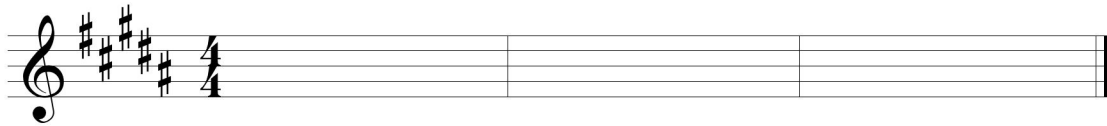
NAME \_\_\_\_\_

## Chapter 28 Dictation Exercises

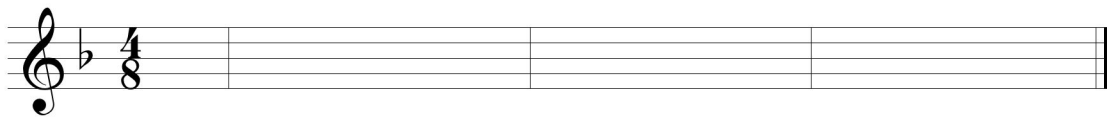
### Section 1. Melodic Dictation

You will hear melodies that are two to four measures in length. Both major and minor keys are possible. Each melody will contain altered tones. The key signature and time signature are provided to you on each blank staff. Click the Play button to hear each exercise. Before each melody begins, you will hear the notes of the entire scale played stepwise up and down, then you will hear the tempo counted off. Write each melody using the correct rhythm.

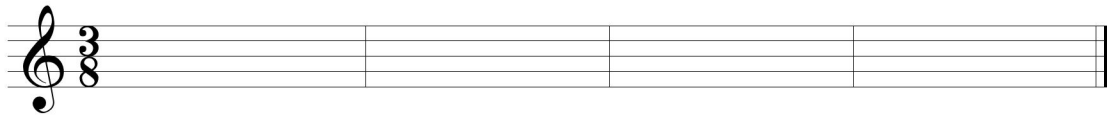
1.



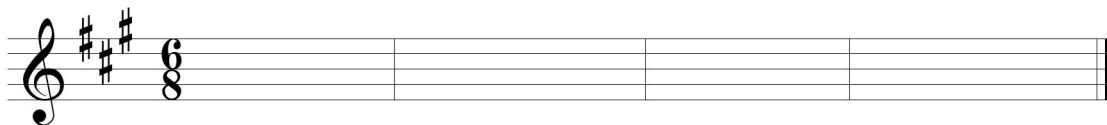
2.



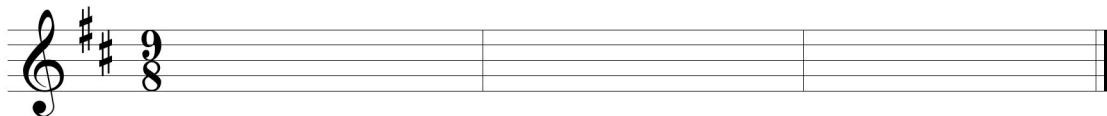
3.



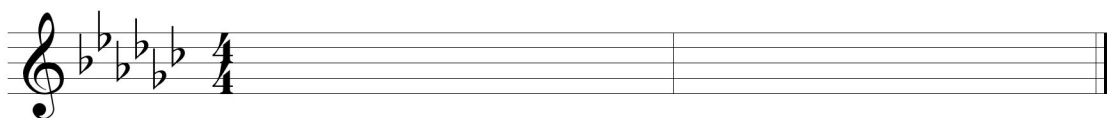
4.



5.



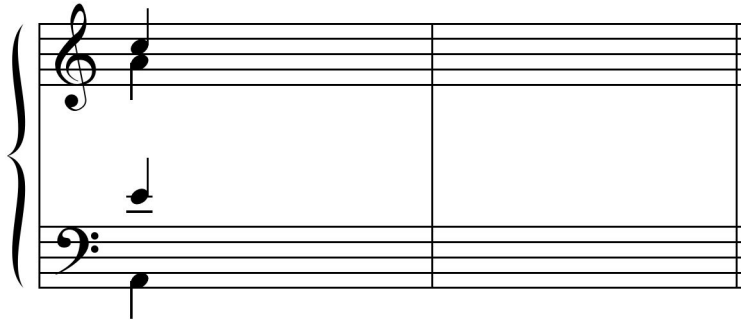
6.



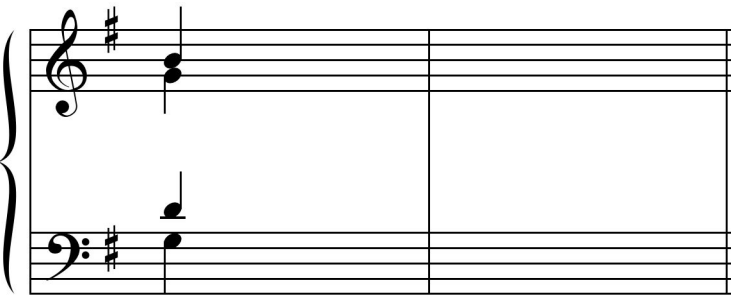
## Section 2. Harmonic Dictation

You will hear chord progressions in four-part harmony. Each progression contains some kind of chromatic chord that you have studied. The first chord is given to you. Before each progression begins, you will hear the notes of the entire scale played stepwise up and down. Notate the soprano and bass lines for each progression, provide a roman numeral analysis, and fill in the inner voices.

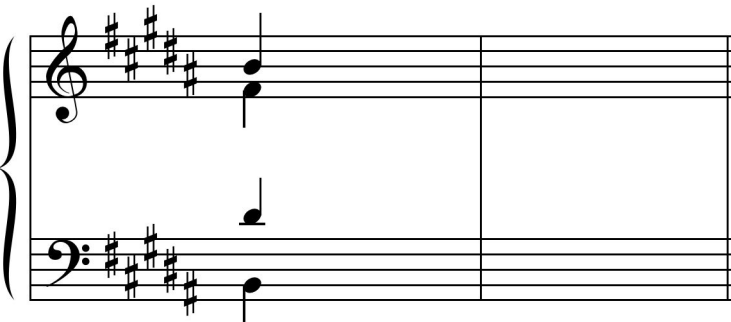
1.



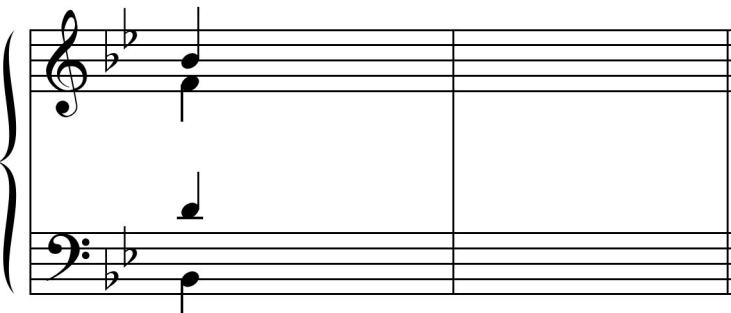
2.



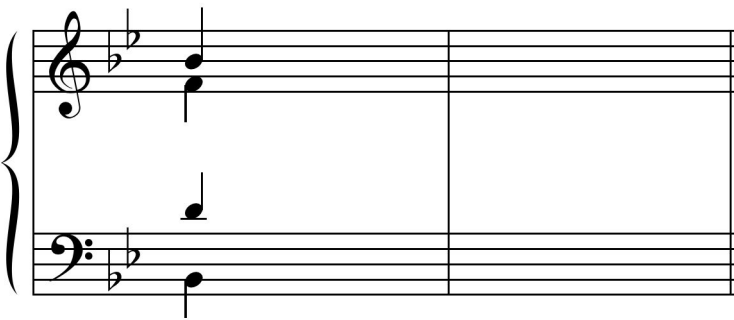
3.



4.

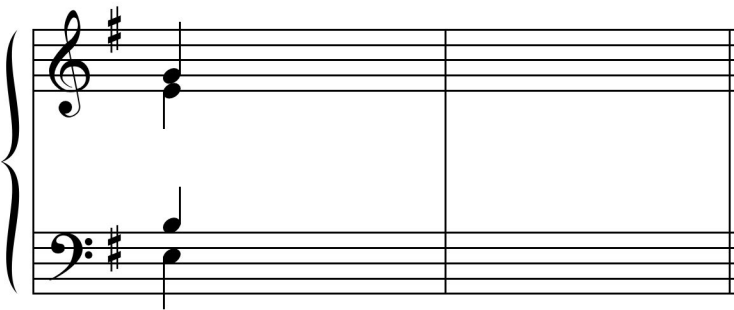


5.



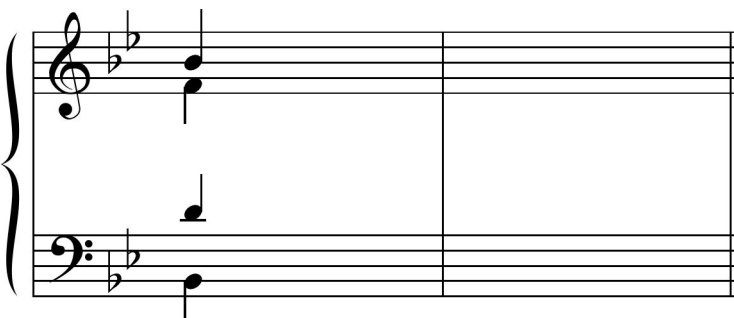
Musical notation for exercise 5, consisting of two staves (treble and bass clef) with a brace on the left. The key signature has two flats (B-flat and E-flat). The first measure contains a whole note chord in the treble clef (F4 and A-flat4) and a whole note chord in the bass clef (B-flat3 and D4). The second measure is empty.

6.



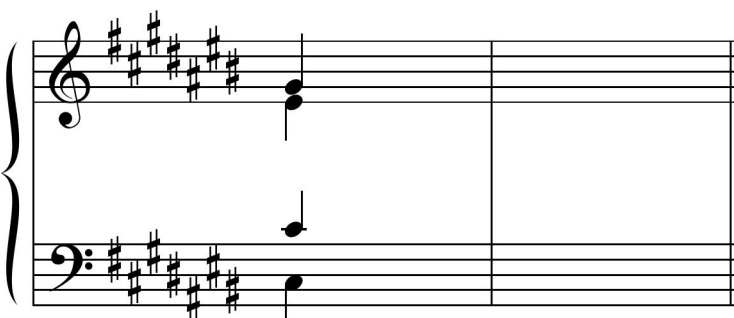
Musical notation for exercise 6, consisting of two staves (treble and bass clef) with a brace on the left. The key signature has one sharp (F#). The first measure contains a whole note chord in the treble clef (F#4 and A4) and a whole note chord in the bass clef (F#3 and A3). The second measure is empty.

7.



Musical notation for exercise 7, consisting of two staves (treble and bass clef) with a brace on the left. The key signature has two flats (B-flat and E-flat). The first measure contains a whole note chord in the treble clef (F4 and A-flat4) and a whole note chord in the bass clef (B-flat3 and D4). The second measure is empty.

8.



Musical notation for exercise 8, consisting of two staves (treble and bass clef) with a brace on the left. The key signature has three sharps (F#, C#, G#). The first measure contains a whole note chord in the treble clef (F#4, A4, and C#5) and a whole note chord in the bass clef (F#3 and A3). The second measure is empty.