

Chapter 25 Dictation Exercises

Section 1. Harmonic Dictation

You will hear chord progressions in four-part harmony. Each progression will modulate using a chromatic modulation technique.


The first chord of each progression is given to you. Before each progression begins, you will hear the notes of the scale of the starting key played stepwise up and down. Notate the soprano and bass lines for each progression, provide a roman numeral analysis, and fill in the inner voices.

1.



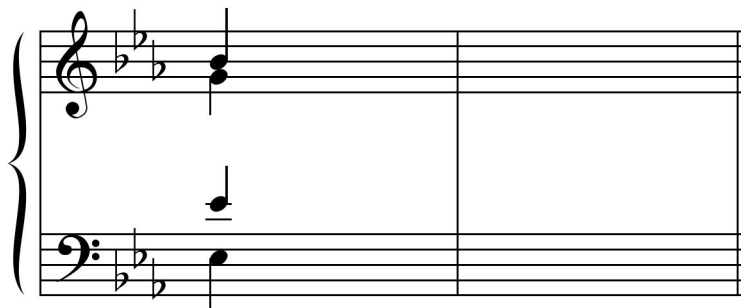
Musical notation for exercise 1. The key signature is two sharps (D major). The first measure shows a chord in the soprano voice (treble clef) consisting of D4, F#4, and A4. The bass voice (bass clef) has a single note D3. The rest of the staff is blank for the student to complete.

2.



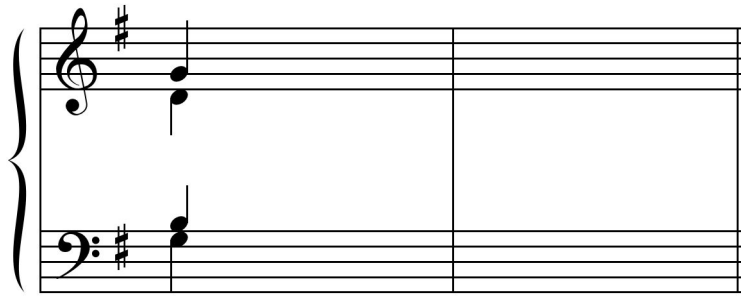
Musical notation for exercise 2. The key signature is three flats (E-flat major). The first measure shows a chord in the soprano voice (treble clef) consisting of E-flat4, G-flat4, and B-flat4. The bass voice (bass clef) has a single note E-flat3. The rest of the staff is blank for the student to complete.

3.



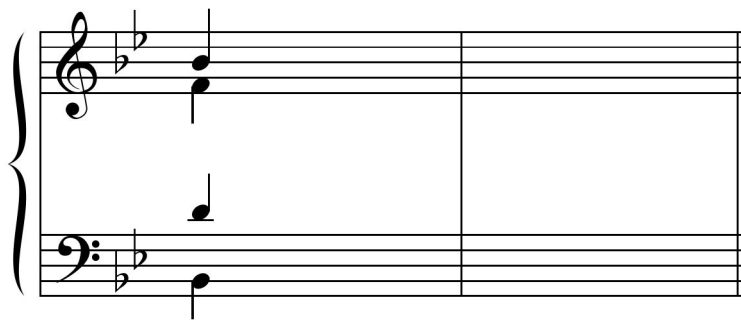
Musical notation for exercise 3. The key signature is three flats (E-flat major). The first measure shows a chord in the soprano voice (treble clef) consisting of E-flat4, G-flat4, and B-flat4. The bass voice (bass clef) has a single note E-flat3. The rest of the staff is blank for the student to complete.

4.



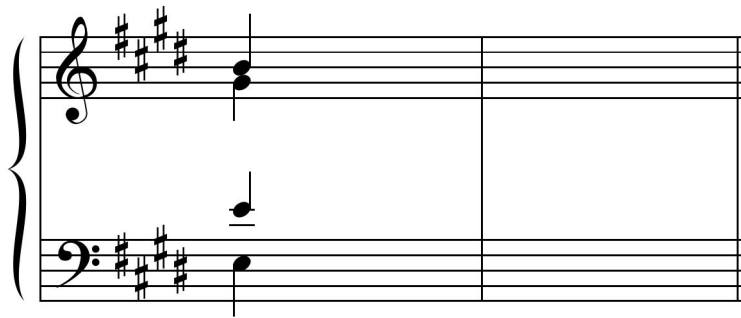
Musical notation for exercise 4, consisting of two staves (treble and bass clef) with a key signature of one sharp (F#). The first measure contains a chord of F#4 and A4 in the treble clef, and a chord of F#2 and A2 in the bass clef. The second measure is empty.

5.



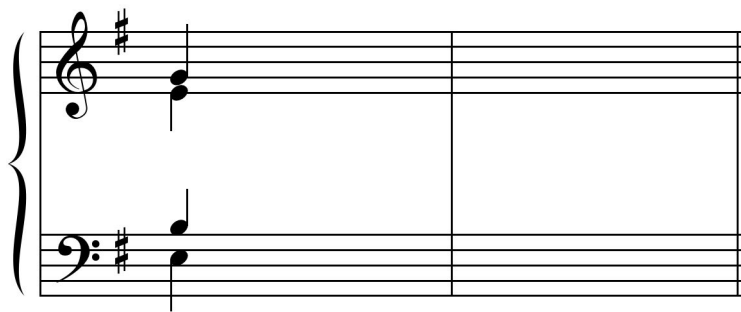
Musical notation for exercise 5, consisting of two staves (treble and bass clef) with a key signature of two flats (Bb, Eb). The first measure contains a chord of Bb4 and Eb4 in the treble clef, and a chord of Bb2 and Eb2 in the bass clef. The second measure is empty.

6.



Musical notation for exercise 6, consisting of two staves (treble and bass clef) with a key signature of three sharps (F#, C#, G#). The first measure contains a chord of F#4, C#4, and G#4 in the treble clef, and a chord of F#2, C#2, and G#2 in the bass clef. The second measure is empty.

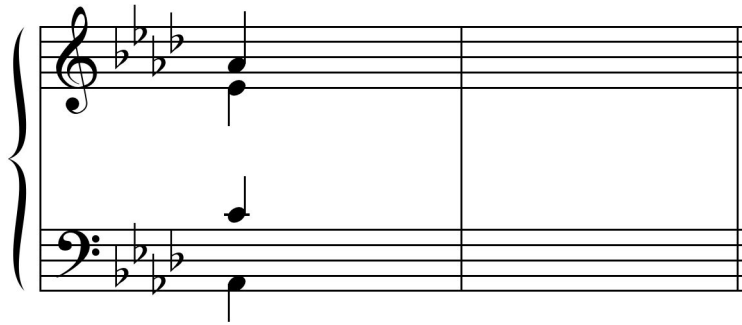
7.



Musical notation for exercise 7, consisting of two staves (treble and bass clef) with a key signature of one sharp (F#). The first measure contains a chord of F#4 and A4 in the treble clef, and a chord of F#2 and A2 in the bass clef. The second measure is empty.

NAME _____

8.



Section 2. Identify Point of Modulation

You will hear modulating progressions in four-voice harmony. The rhythms below represent the rhythm of each chord progression. Circle the chord of modulation in each rhythm.

