

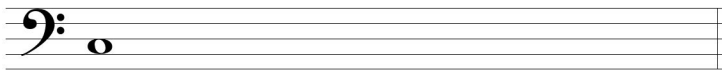
Chapter 22 Dictation Exercises

Section 1. Melodic Dictation with Chromatic Tones

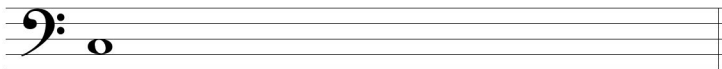
You will hear melodic patterns that are three to five notes in length. Both major and minor keys are possible. The key signature and starting pitch are provided to you on each blank staff. Click the Play button to hear each exercise. Before each melody begins, you will hear the notes of the pentachord played stepwise up and down.

Notate each melodic pattern with whole notes. Melodies 1–6 are three notes in length, Melodies 7–8 are four notes in length, and Melodies 9–10 are five notes in length.

1.



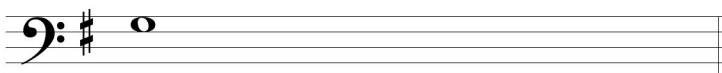
2.



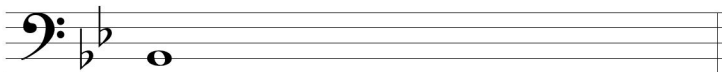
3.



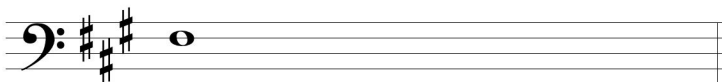
4.



5.



6.



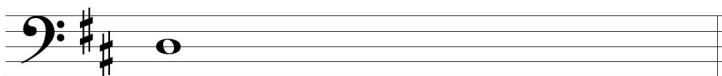
7.



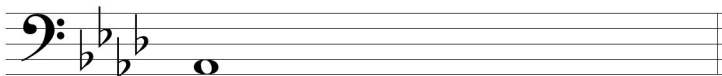
8.



9.



10.



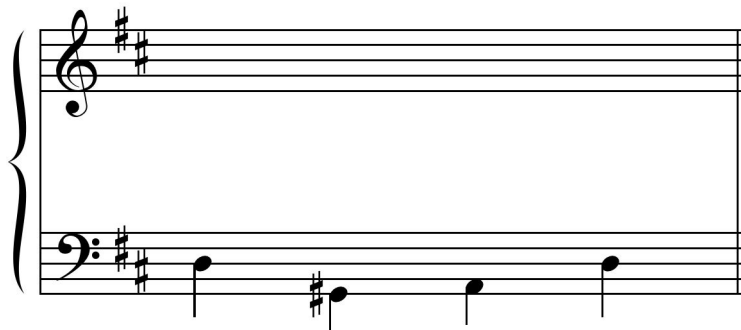
Section 2. Harmonic Dictation

a. Bass line given

You will hear chord progressions in four-part harmony. Each progression will contain a secondary dominant.

The bass line is given to you. Before each progression begins, you will hear the notes of the scale of the starting key played stepwise up and down. Notate the soprano line for each progression, provide a roman numeral analysis, and fill in the inner voices.

1.



NAME _____

2.

3.

4.

b. Soprano line given

You will hear chord progressions in four-part harmony. Each progression will contain a secondary dominant.

The soprano line is given to you. Before each progression begins, you will hear the notes of the scale of the starting key played stepwise up and down. Notate the bass line for each progression, provide a roman numeral analysis, and fill in the inner voices.

5.

Musical notation for exercise 5, consisting of a grand staff with treble and bass clefs. The key signature has two flats (B-flat and E-flat). The treble staff contains a sequence of five quarter notes: B4, A4, G4, F4, and E4. The bass staff is empty.

6.

Musical notation for exercise 6, consisting of a grand staff with treble and bass clefs. The key signature has three sharps (F#, C#, G#). The treble staff contains a sequence of five quarter notes: F#4, G#4, A4, B4, and C5, followed by a whole note C5 in the second measure. The bass staff is empty.

7.

Musical notation for exercise 7, consisting of a grand staff with treble and bass clefs. The key signature has four flats (B-flat, E-flat, A-flat, and D-flat). The treble staff contains a sequence of five quarter notes: B4, A4, G4, F4, and E4. The bass staff contains a sequence of five quarter notes: B3, A3, G3, F3, and E3.

8.

Musical notation for exercise 8, consisting of a grand staff with treble and bass clefs. The key signature has four flats (B-flat, E-flat, A-flat, and D-flat). The treble staff contains a sequence of five quarter notes: B4, A4, G4, F4, and E4, followed by a whole note E4 in the second measure. The bass staff contains a sequence of five quarter notes: B3, A3, G3, F3, and E3.